

#### DESCRIPTION DU PRODUIT

Sable Siliceux, Lavé, Criblé et Séché. Granulométrie entre 0,075 et 0,700 mm.

#### APPLICATIONS

Idéal pour la production de: Moules pour Fonderie, Sport & Leisure, Drainage, Dépuration.

**EMBALLAGES:** Sacs de 25 kg – Big Bag de 1575 kg.

#### ANALYSE CHIMIQUE

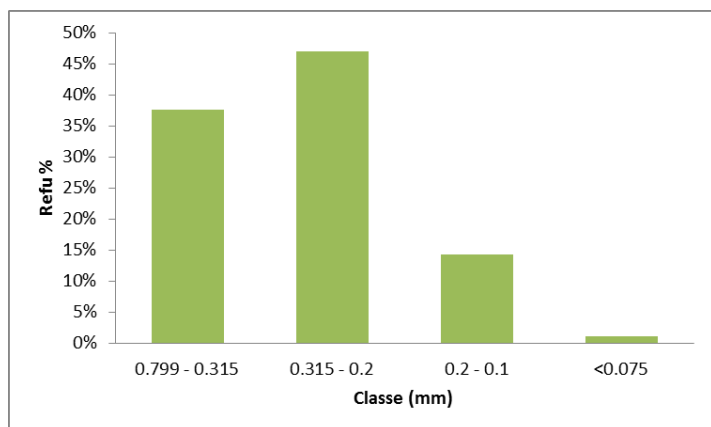
Silice (SiO <sub>2</sub> )	98,91%
Oxyde de Fer (Fe <sub>2</sub> O <sub>3</sub> )	887.5 ppm
Oxyde de Sodium (Na <sub>2</sub> O)	0.465%
Oxyde di Calcium (CaO)	0.016%
Oxyde de Aluminium (Al <sub>2</sub> O <sub>3</sub> )	0,291%
Oxyde de Potassium (K <sub>2</sub> O)	0.01%
Dioxyde de Titanium (TiO <sub>2</sub> )	<0.01%

#### DONNES TECHNIQUES

Umidité	0.1% Max
Témpérature de Fusion	1600 °C
Densité réelle	1350 kg/m <sup>3</sup>
Couleur	Blanc Gris mixte

#### ANALYSE GRANULOMETRIQUE Valeurs Indicatives

Classe mm	Refu%
0.700 - 0.315	37.56%
0.315 - 0.2	46.95%
0.2 - 0.1	14.34%
<0.1	1.14%



#### PRODUCT DESCRIPTION

Silica Sand, Washed, Graded and Dried. Granulometry between 0.075 and 0.700 mm.

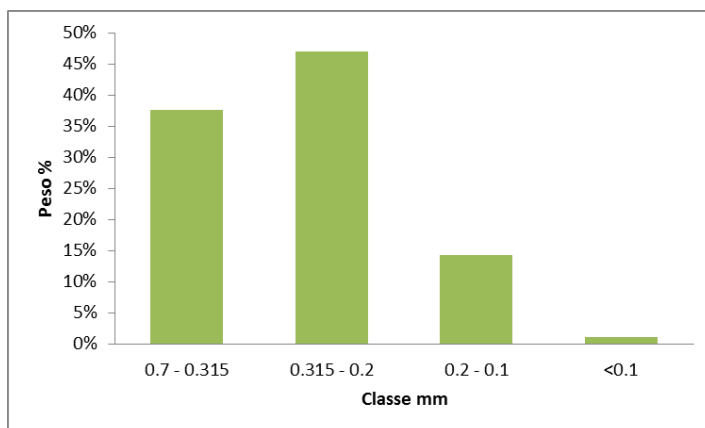
#### PRODUCT APPLICATIONS

Ideal for the production of: Casting Moulds , Sport & Leisure, Drainage, Depuration.

**PACKAGING:** 25 kg bags – Big Bag of 1575 kg.

CHEMICAL ANALYSIS	
Silica (SiO <sub>2</sub> )	98.91%
Iron Oxide (Fe <sub>2</sub> O <sub>3</sub> )	887.5 ppm
Sodium Oxide (Na <sub>2</sub> O)	0.465%
Calcium Oxide (CaO)	0.016%
Alluminium Oxide (Al <sub>2</sub> O <sub>3</sub> )	0.291%
Potassium Oxide (K <sub>2</sub> O)	0.01%
Titanium Dioxide (TiO <sub>2</sub> )	<0.01%

TECHNICAL DATA	
Umidity	1.0% Max
Melting Temperature	1600 °C
Density	1320 kg/m <sup>3</sup>
Colour	White Gray mix
GRANULOMETRIC ANALYSIS	
Indicative Values	
Mesh mm	Weight %
0.700 - 0.315	37.56%
0.315 - 0.2	46.95%
0.2 - 0.1	14.34%
<0.1	1.14%



### DESCRIZIONE PRODOTTO

Sabbia Silicea, Lavata, Vagliata ed Essiccata. Granulometria compresa tra 0.075 e 0.700 mm.

### APPLICAZIONI E CAMPI DI IMPIEGO

Ideale per la produzione di: Collanti, Malte, Intonaci, Pitture, Ceramiche, Stampi di Fonderia.

Sport & Laisure, Sabbiatura.

**CONFEZIONI:** Sacchi da 25 kg – Big Bag da 1575 kg - Sfuso

#### ANALISI CHIMICA

Silice (SiO <sub>2</sub> )	98.91%
Ossido di Ferro (Fe <sub>2</sub> O <sub>3</sub> )	887.5 ppm
Ossido di Sodio (Na <sub>2</sub> O)	0.465%
Ossido di Calcio (CaO)	0.016%
Ossido di Alluminio (Al <sub>2</sub> O <sub>3</sub> )	0.291%
Ossido di Potassio (K <sub>2</sub> O)	0.01%
Diossido di Titanio (TiO <sub>2</sub> )	<0.01

#### DATI TECNICI

Umidità	0.1% Max
Temperatura di Fusione	1600 °C
Peso Specifico	1350 kg/m <sup>3</sup>
Colore	Bianco

#### ANALISI GRANULOMETRICA Valori Indicativi

Classe mm	Peso%
0.700 - 0.315	37.56%
0.315 - 0.2	46.95%
0.2 - 0.1	14.34%
<0.1	1.14%

